

in association with  
Hadfield Cawkwell Davidson



▲ **Here's to HLM:** Celebrating 100 Best Companies to Work For award

# Inspirational spaces to raise awareness

**F**LEXIBILITY, innovation and practicality are three elements which underpin our design philosophy, and which we believe are key in creating the best building possible.

Our focus is inclusive design, sustainability and community involvement.

Not only do we seek to create inspirational spaces, we actively encourage people to interact with their environment, raising awareness of architecture and embrace it.

Our commitment to a sustainable approach, not only to our designs but in how we operate our business, was recently recognised by us being shortlisted as finalists for Designer of the Year in the Sustainability Awards, winner of the Bright Sparks Award by BSRIA, and winner of the

## HLM Architects

Carbon Champion Awards.

Our depth of expertise embraces the skills of architects, technicians, interior designers and landscape architects, working in healthcare, education, residential, commercial, justice and defence.

Employing more than 150 people, our presence extends beyond Sheffield with offices in London, Guildford, Glasgow, Belfast and Cardiff.

We believe that by promoting collaborative working internally and externally, we are able to maintain our client- and project-driven ethos.

By uniting and sharing creative talent across the practice we deliver appropriate design and management skills as one team to

an established Client base.

Sheffield has been the home and the heart of our business for over 25 years.

Recently completed projects include a new generation of primary education facilities in Barnsley, alongside our lead design role in the Building Schools for the Future programme, the largest single schools capital investment programme for over 50 years.

Our founding of the Sheffield Charity Construction Ball, the biggest construction industry event in the North of England has raised £70,000 for charities since its launch in 2001.

Our staff bestowed the honour of awarding us a place in the Sunday Times 100 Best Small Companies to Work For Awards 2006.

Contact [www.hlmarchitects.com](http://www.hlmarchitects.com).

# Versatile young team eco-friendly

## CODA

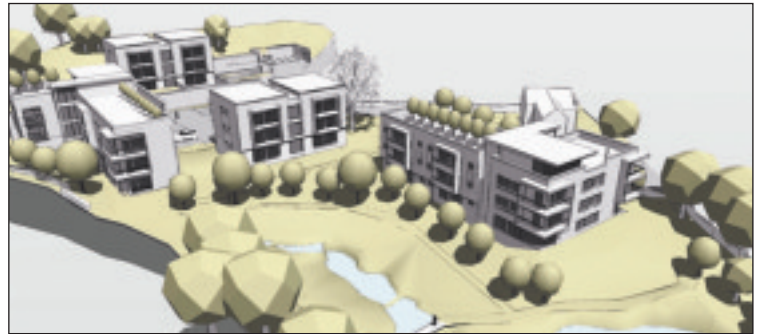
**C**ODA is a young and versatile award-winning architectural practice based in the heart of Sheffield's riverside regeneration district.

It has two directors, three associates and eleven more staff, and maintains a relaxed, creative and unrestricted work ethic, qualities which have no doubt aided the practice's rapid growth since its inception three years ago.

The practice is based in its own purpose-built Hope Works, part of a larger development of 81 one-bed riverside apartments designed by them for Riverdale Construction.

Coda is involved in a whole series of riverside developments along Mowbray Street, Neepsend.

Other developments include 31 apartments and offices at Union Forge, 25 new-build apartments and 10 refurb apartments at the Foundry, 24 apartments and more than 10,000ft sq of offices at Bruce Works, and 16,000ft sq of start-up office and business space at Neepsend Triangle.



▲ **CODA style:** Design for new apartments at Ranmoor

Coda is experiencing a rise in clients wanting eco-friendly features and credentials incorporated into their schemes. The practice welcomes this eco-shift.

Director David Cross said: "Clients are much more open-minded about suggestions to improve efficiency. Many realize that there is a huge demand for green buildings. This has been seen in many of our recent commissions."

The practice has just been granted planning permission for an ambitious development of 35 high-end, eco-friendly apartments for our client Jaguar Estates.

Set in the mature landscaped grounds of the former Ranmoor Hall complex, the development features a babbling stream and idyllic ponds, within the magnificent Ranmoor conservation area.

**HLM ARCHITECTS**



- Architecture
- Landscape Architecture
- Interior Design
- BREEAM Assessments

2nd Floor  
The Ruskin Building  
Tudor Square  
Sheffield  
S1 2LA  
tel: 0114 263 9600

[www.hlmarchitects.com](http://www.hlmarchitects.com)



Barnsley Grouped Schools PFI Project - Kings Oak Primary Learning Centre

London Guildford Sheffield Glasgow Belfast Cardiff



contemporary  
architecture

Where architecture and design unite to deliver the complete development marketing package



- Architecture
- Development Consultants
- Interior Design
- Landscape Design
- Graphic Design
- Visualisation

AWARD WINNING



Call on 0870 990 3095  
email [info@codastudios.co.uk](mailto:info@codastudios.co.uk)  
or visit the website at  
[www.codastudios.co.uk](http://www.codastudios.co.uk)